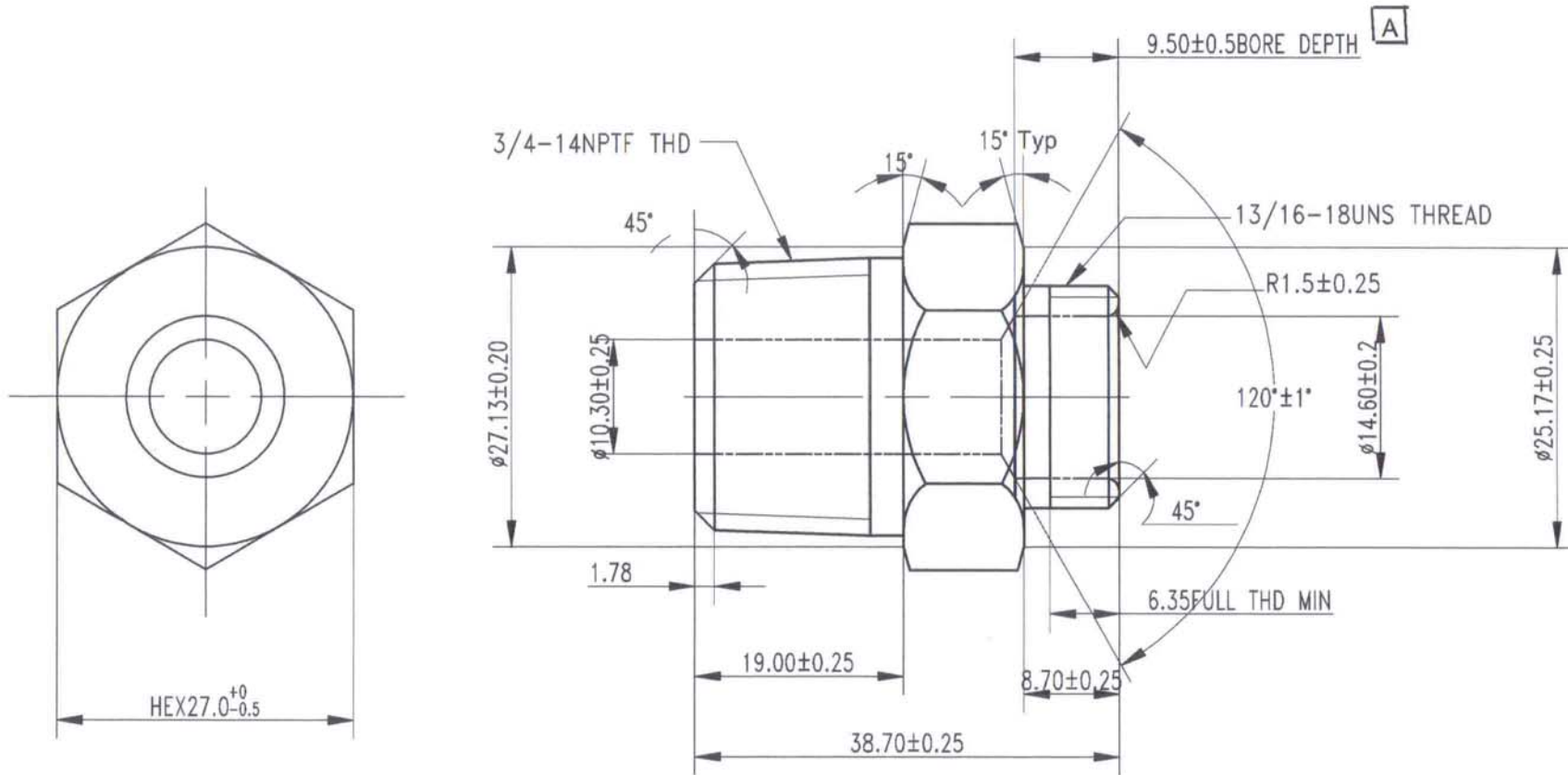


REV 更改号	DATE 日期	REVISION DETAILS 更改内容	APPD 审核并批准
A	Apr.5,2016	This dim. is changed to start of cone	



UNLESS SPECIFIED  
ALL DIMENSIONS IN mm,  
MACHINED SURFACES Ra=3.2um,  
ANGLE TOLERANCES ±1°,  
Other tolerance except angles,  
In accordance with  
GB/T1804-2000(ISO2768-1)-m  
and GB/T1184-1996(ISO2768-2)-m

其它事项,  
图示尺寸单位为mm,  
未注机加工表面粗糙度 Ra=3.2um,  
未注角度公差 ±1°,  
其它未注公差 (除角度外) 均按:  
GB/T1804-2000(ISO2768-1)-m 和  
GB/T1184-1996(ISO2768-2)-m

[REDACTED]			
PART No 零件名	<b>40970-FZ8-12NPTF</b>		
SCALE:	APPD: 批准 Zhang	DRN: 制图 KEVIN	DATE: 日期 2016.03.08
NTS	DATE: 日期 07/04/16	CHK: 审核 Tong Bing Zhu	DATE: 日期 2016.03.08

MATERIAL Chinese steel 45

材质: 45#

FINISH

Remove all sharp edges,burrs,silvers and swarf, break all edges 0.127~0.254mm.  
ZINC PLATING WITH 12um MICRONS MINIMUM PLATING THICKNESS AND TRIVALENT CHROMATE PASSIVATION  
AND WITHSTAND 96 HRS TO WHITE / 144 HS TO RED RUST IN SALT SPRAY TEST.

去除所有毛刺, 铁屑等残留物, 锐边倒钝0.127-0.254mm. 镀锌, 三价铬钝化,  
银白色, 盐雾试验96小时无白斑, 144小时无红锈, 镀锌层厚度大于12um.